

Baying a 6 Pulse Incomer Shell to a Free Standing Drive

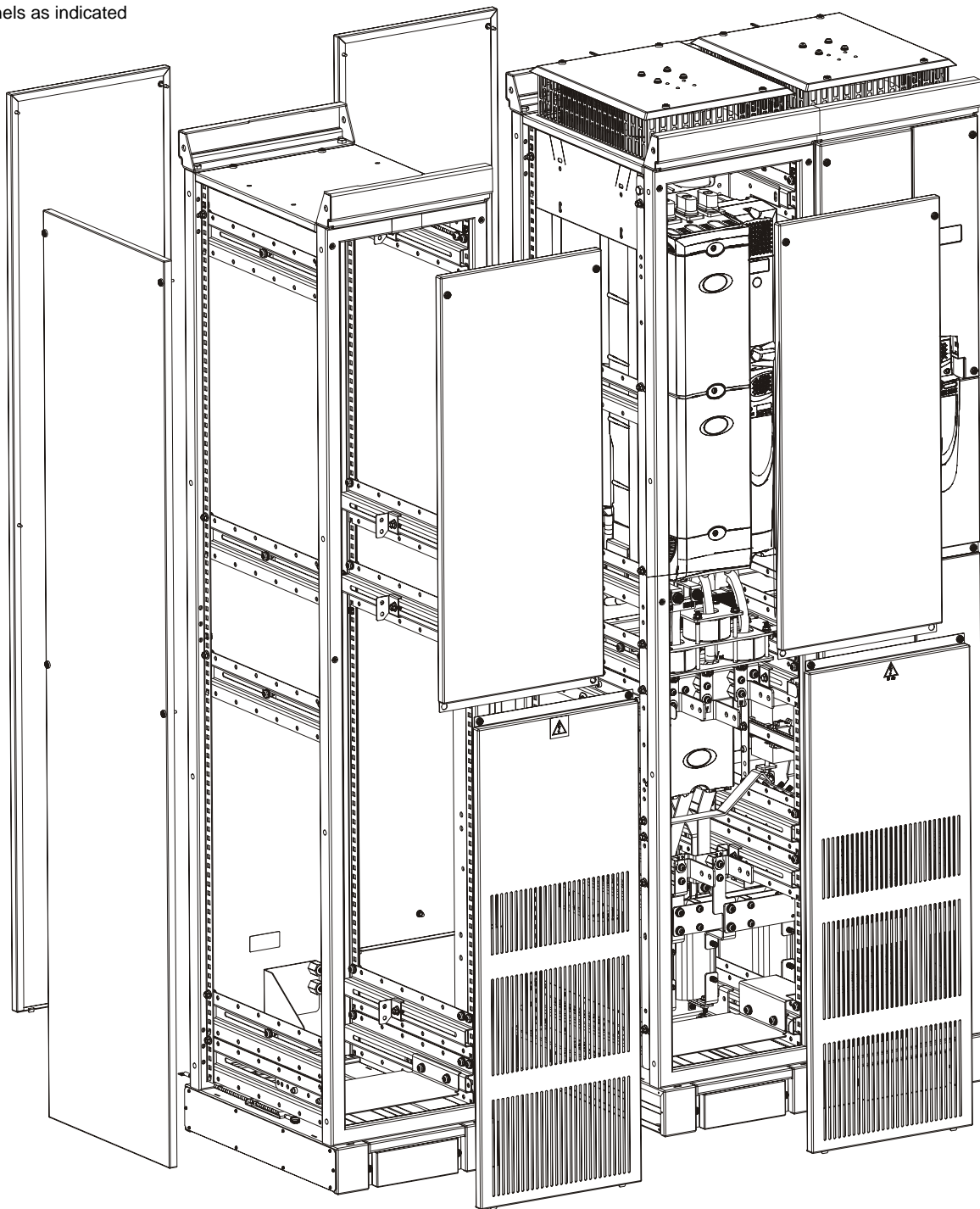
The 6 pulse incomer shell is designed to be bayed to a 6 pulse Unidrive SP size 8 or size 9 free standing drive.

Note that the procedure is the same for baying an incomer shell to a size 8 or size 9 free standing drive. Figure 1-1 illustrates a size 9 with master and slave cubicles already bayed together.

Also, the left hand side panel of a size 8 or size 9 free standing drive should be removed and used on the left hand side of the incomer shell. The incomer shell is not supplied with side panels.

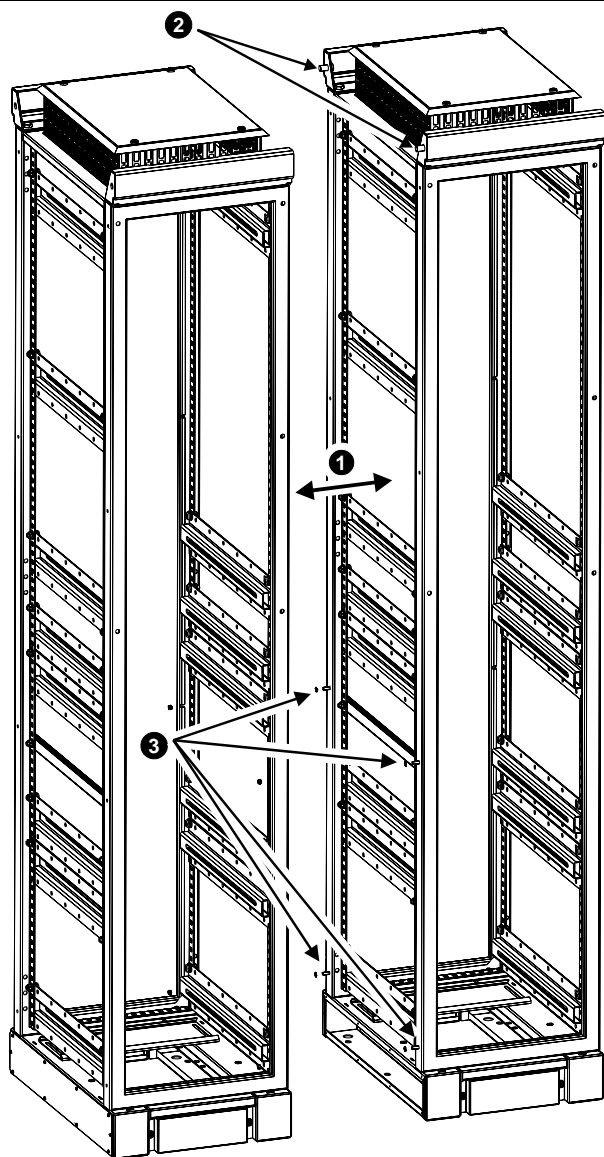
Figure 1-1 Preparation for baying a 6 pulse incomer shell to a free standing drive

Remove panels as indicated

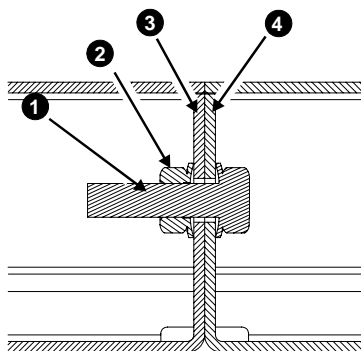


The total weight of the size 9 free standing drive and incomer shell is: 671 kg (1479 lb), i.e. 266 kg (586 lb) per free standing cubicle and 139 kg (306 lb) for the incomer shell. Lift the drive by the method detailed in the *Unidrive SP User Guide*. Do not tilt the drive. The centre of gravity of the unit is high. An overturning unit can cause physical injury.

Figure 1-2 Baying of cubicles

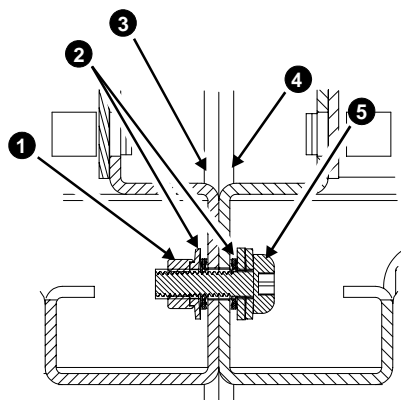


1. Push the two cubicles together
2. Fix in two places (front and back) with M10 nuts and bolts, through the lifting plates
3. Fix in four places (two at the front and two at the back) with M6 nuts, bolts and washers.



Lifting plates M10 fastening (2 places)

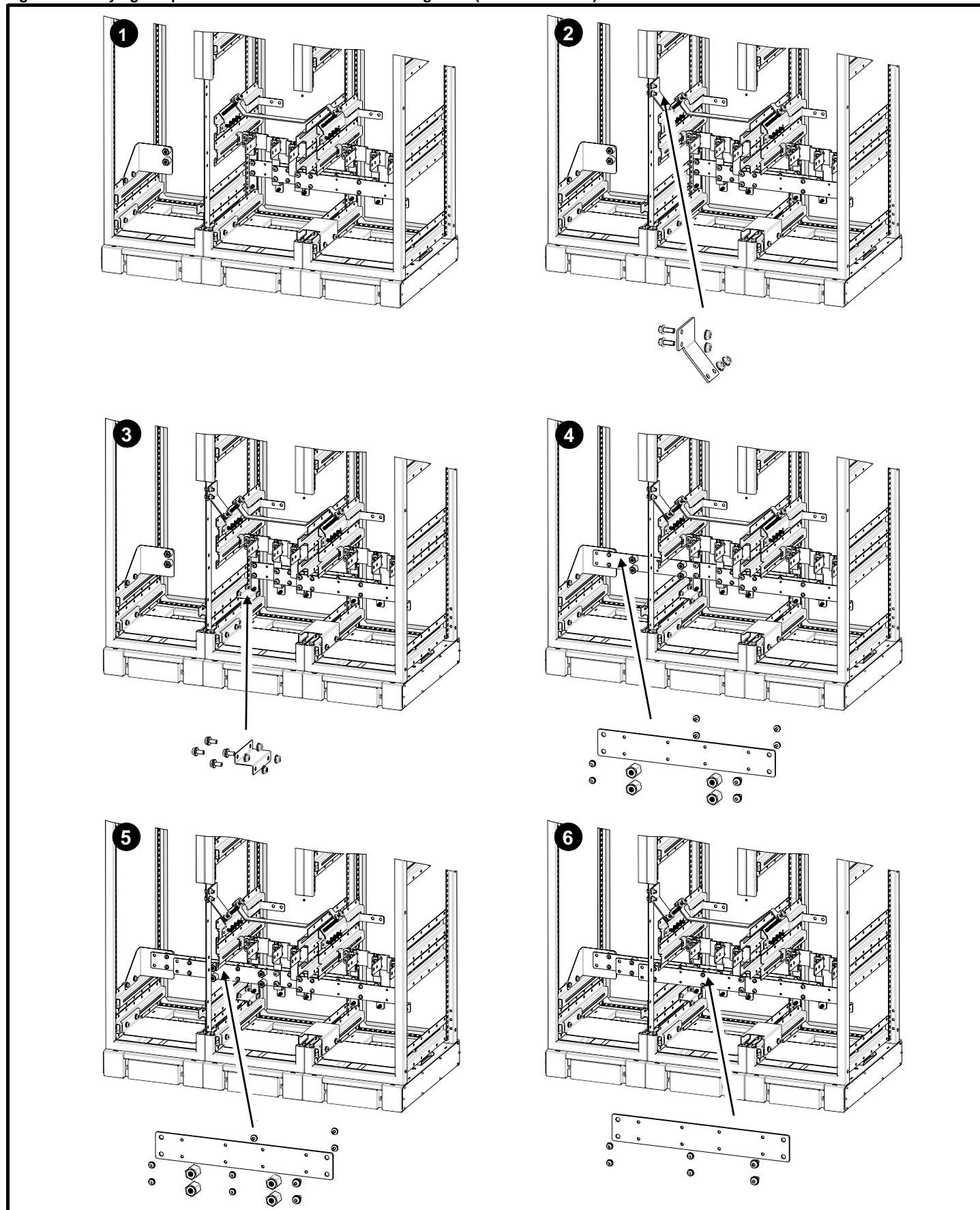
1. M10 flange headed set screw
2. M10 nut
3. Slave cubicle frame
4. Master cubicle frame



Frames M6 fastening (4 places)

1. M6 nut
2. M6 star lock washer
3. Slave cubicle frame:
4. Master cubicle frame
5. M6 screw

Figure 1-3 Baying a 6 pulse incomer shell to a free standing drive (size 9 illustrated)



1. Free standing drive (size 9) and incomer cubicle bayed together

From the incomer baying kit (6771-0026):

2. Fit the safety ground link: 6771-0029 (M10 nuts and screws)

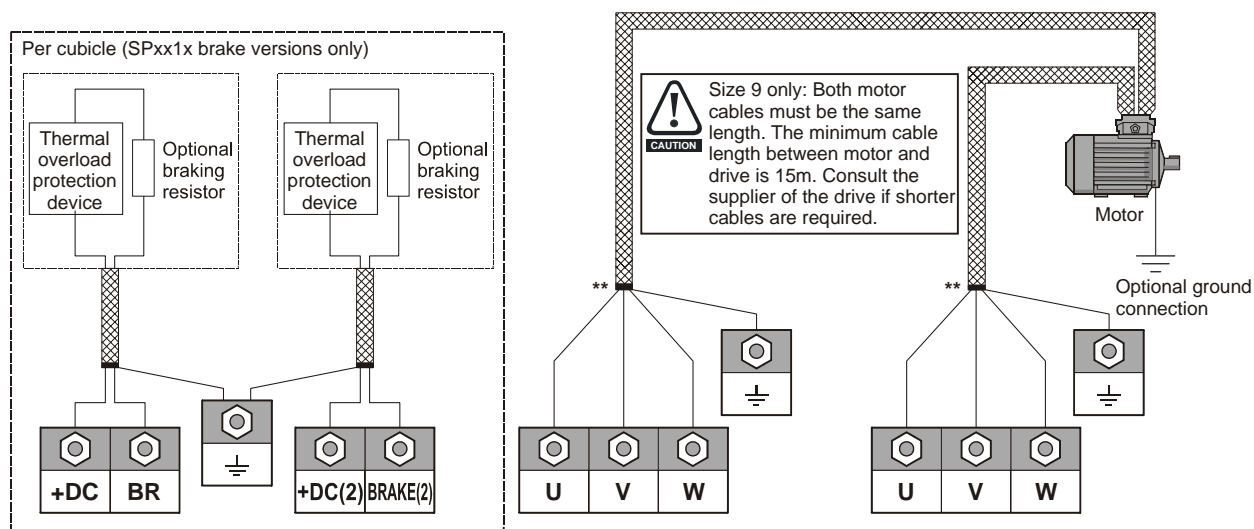
3. Fit the EMC plate: 6771-0046 (M8 nuts and screws)

4. Fit the input parallel busbar: 6531-0222 (M8 x 20 screws); and M6 x 30 insulating spacer: 6262-0630 (M6 x 12 screws)

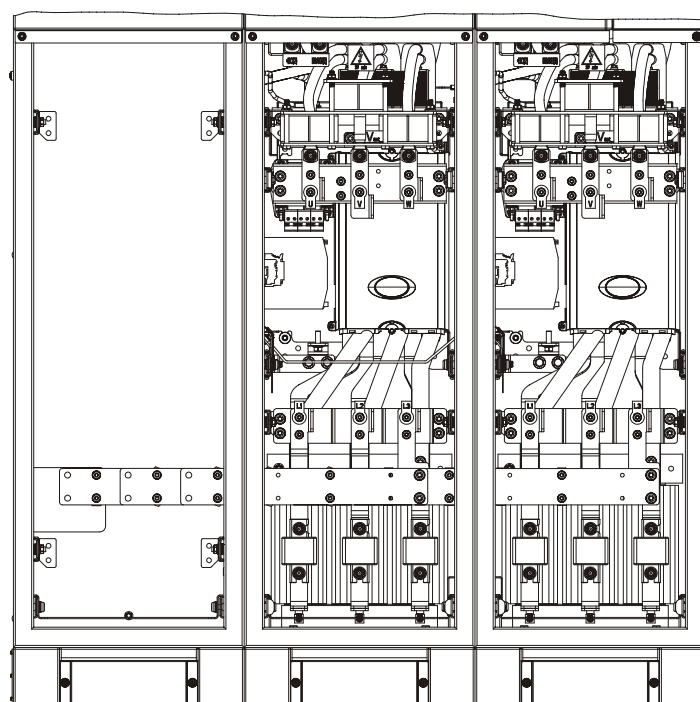
5. Fit the input parallel busbar: 6531-0222 (M8 x 20 screws); and M6 x 30 insulating spacer: 6262-0630 (M6 x 12 screws)

6. Fit the input parallel busbar: 6531-0222 (M8 x 20 screws)

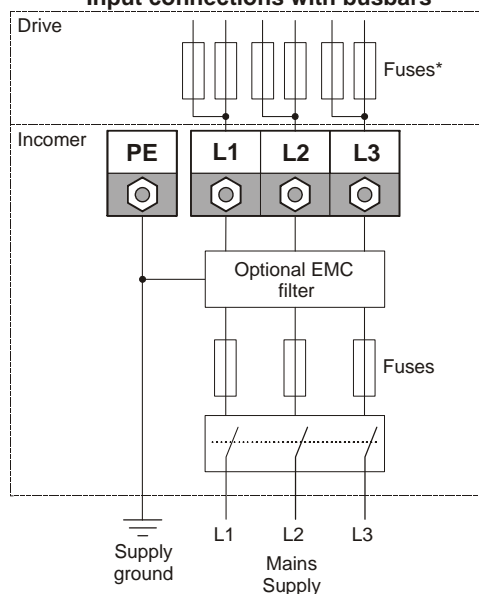
Figure 1-4 Unidrive SP free standing drive power connections



Output connections



Input connections with busbars



SCIENCE GATE
Your Automation Partner

SCIGATE AUTOMATION (S) PTE LTD
No.1 Bukit Batok Street 22 #01-01 Singapore 659592
Tel: (65) 6561 0488 Fax: (65) 6562 0588
Email: sales@scigate.com.sg Web: www.scigate.com.sg
Business Hours: Monday - Friday 8.30am - 6.15pm

*Cubicles are supplied without internal fuses as standard, the user must fit them during installation. Fuses may be bought from Control Techniques.

**Cable shield must be bonded to gland plate.